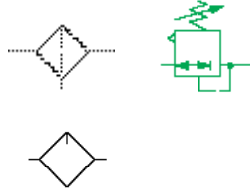


Ported stainless steel equipment

Filters, pressure regulators, lubricators

F22, R22, L22

1/2" PTF



Lloyds Register Type Approved

Materials meet NACE* recommendations (MR-0175, 2002 revision)

25 µm filter element and auto drain as standard

Orientable metal bowls with sightglasses

* National Association of Corrosion Engineers – recognised oil-field recommendation for resistance to sulphide stress cracking common in well-head and other corrosive environments

Technical data

Medium:

Compressed air only

Maximum inlet pressure:

17 bar (F22, L22)

20 bar (R22)

Gauge ports:

1/4 PTF (R22)

Start point:

1,7 dm³/s @ 6,3 bar (L22)

Ambient temperature:

-20°C to +80°C

Consult our Technical Service for use below +2°C

Materials

Bowl, bonnet & adjusting screw: stainless steel

Elastomers: synthetic rubber

Filter element: sintered stainless steel, polyethylene (option of stainless steel)

Alternative models

5 µm element

Pressure ranges

Non-relieving versions

Contact our Technical Service for details

Filters

Port size	Flow (dm ³ /s)*	Element (µm)	Drain	Bowl	kg	Model	Service kit
1/2 PTF	57	25	Auto	Metal	1,88	F22-400-A2DA	F22-100A
1/2 PTF	57	25	Manual	Metal	1,84	F22-400-M2DA	F22-100M

* Maximum flow with 6,3 bar inlet pressure and pressure drop of 0,5 bar.

Pressure regulators

Port size	Flow (dm ³ /s)*	Range (bar)	Operation	kg	Model	Service kit
1/2 PTF	50	0,4 ... 10	Relieving	1,52	R22-401-RNMA	R22-100R
1/2 PTF	50	0,4 ... 10	Non-relieving	1,54	R22-401-NNMA	R22-100NR

*Can be adjusted to zero bar outlet pressure, and, generally to pressures in excess of those specified.

Maximum flow with 10 bar inlet pressure, 6,3 bar outlet pressure and a pressure drop of 1 bar from set.

Lubricators




Port size	Flow (dm ³ /s) #	Start point (dm ³ /s)‡	Operation	Bowl	Bowl capacity	kg	Model *	Service kit
1/2 PTF	48	1,7	Oil-fog	Metal	0,2 l	1,93	L22-400-0P8A	L22-100

#Typical flow with 6,3 bar inlet pressure and 0,5 bar pressure drop.

* Models listed in the order table must not be located downstream of frequently cycling directional control valves. Order the optional bi-directional oil-fog lubricator for use under such conditions.

‡ Start point at 6,3 bar.

Accessories

Series	Bracket kit	Gauge (0 ... 10 bar)#	Neck mounting bracket
F22			
F22	18-001-962		
R22	18-001-962	18-013-909*	18-001-959 (Panel nut and single bracket)
L22	18-001-962		

Other pressure ranges available – see page 486

* Stainless steel items not strictly to NACE standard MR-01-75.

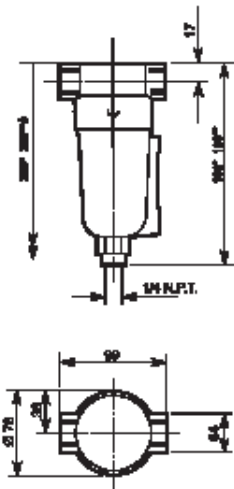
Ported stainless steel equipment

Filters, pressure regulators, lubricators

F22, R22, L22

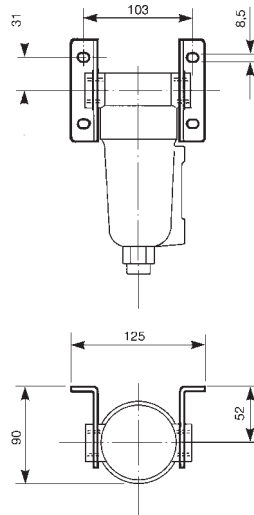
1/2" PTF

F22

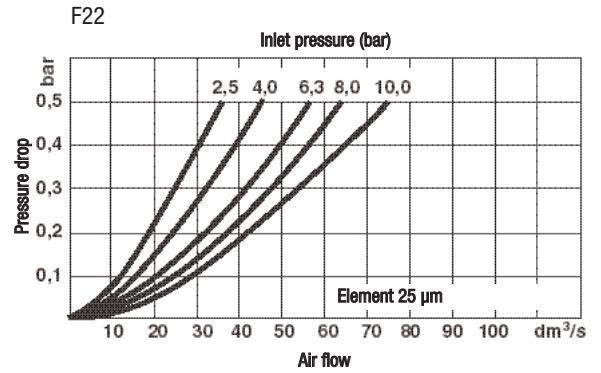


Weight: 1,88 kg
 *Auto **Manual
 # Minimum clearance required to remove bowl from body

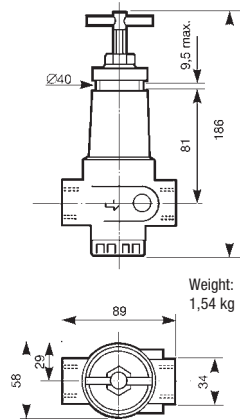
Bracket mounting (F22)



Flow characteristics

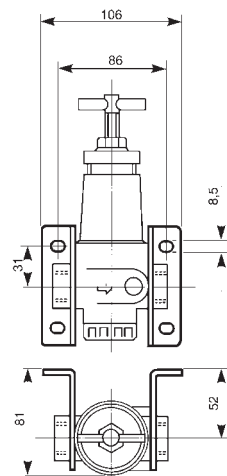


R22

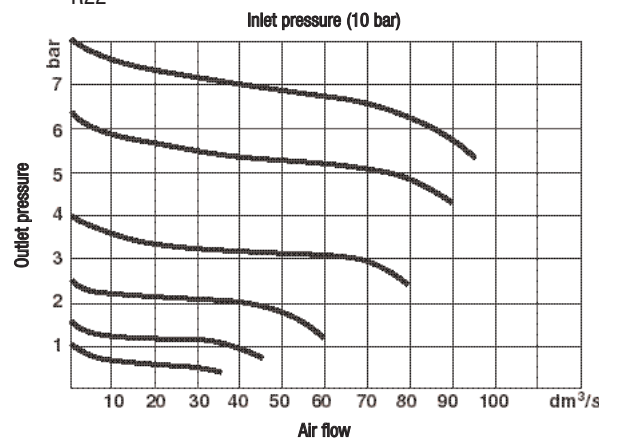


Weight: 1,54 kg

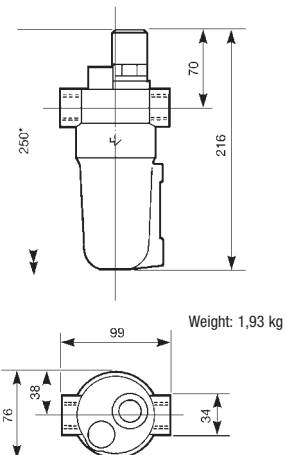
Bracket mounting (R22)



R22

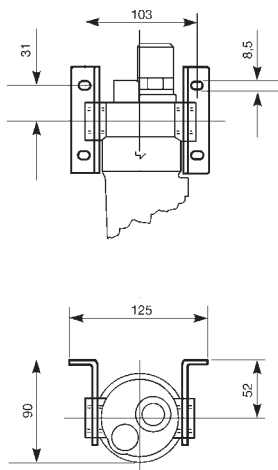


L22



Weight: 1,93 kg

Bracket mounting (L22)



L22

